

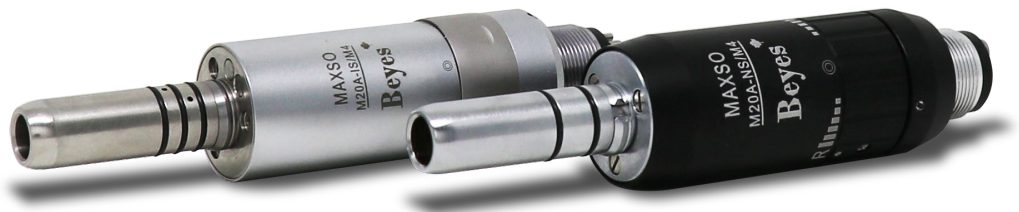
# Maxso®

## Air Motor

M20A Motor offers efficient, powerful, and constant torque with operational speeds up to 20,000 rpm. Its innovative fluid dynamics generate about twice as much torque compared to a conventional low speed motor in the 5,000–10,000 rpm range. M20A Motor is comfortable to operate - it is lightweight, perfectly balanced, and delivers smooth power control.

Versatile, it can be used for a wide range of tasks such as grinding dentures, adjusting, finishing, and polishing restorations, and for tooth polishing with a prophylaxis angle. M20A Motor is designed for enhanced durability and offers an extended working life. Other features include: forward/reverse drive with continuous speed control, double-lock connection, autoclave safe design, and compatibility with standard ISO E-type attachments.

- Powerful torque even at a low speed
- Long working life
- Perfectly balanced, lightweight design
- Forward/reverse drive with continuous speed control
- Safe and easy double-lock connection
- Autoclavable for complete infection control
- Compatible with all standard ISO E-type attachments
- 1 year warranty



## Key Specifications

<b>Maximum speed</b>	5,000 rpm – 20,000 rpm
<b>Air Pressure Range</b>	0.2-0.3 MPa
<b>Exhaust Pressures Recommended</b>	0.07 MPa, max. *0.25 MPa
<b>Recommended Air Pressure Range</b>	0.25 MPa
<b>Water Pressure Range</b>	0.05-0.2 MPa
<b>Usage Speed Range</b>	5,000-20,000 rpm
<b>Air Flow (At 0.25MPa)</b>	46 NL/min
<b>Stop Torque (At 0.25MPa)</b>	3.5 N cm



## Order Information

Non Spray

Internal Spray



**M4 Backend**  
Non-Optic, 20K  
Code: **MT2010**  
Model: **M20A-NS/M4**



**B2 Backend**  
Non-Optic, 20K  
Code: **MT2011**  
Model: **M20A-NS/B2**



**E6 Backend**  
Fiber Optic, 20K  
Code: **MT2007**  
Model: **M20A-IS/E6**



**M4 Backend**  
Non-Optic, 20K  
Code: **MT2009**  
Model: **M20A-IS/M4**



**Beyes Dental Canada Inc.**  
23-595 Middlefield Road  
Toronto, Ontario, M1B 3M5  
Canada  
Tel: 1-855-603-1888  
Email: info@beyes.ca  
Web: www.beyes.ca



**Lotus NL B.V.**  
Koningin Julianaplein 10, le Verd,  
2595AA, The Hague,  
Netherlands  
Tel: +31645171879 (English)  
+31626669008 (Dutch)  
Web: www.beyes.ca

### Your Dealer for Beyes Products

Scan the QR code for more information



Printed in Canada  
File #: ENB025  
Rev. 1 / 11.02.20

© Beyes Canada Inc 2020. All Rights Reserved.  
Specifications are subject to change without notice.  
All brands are holders of their respective trademarks.  
All Beyes products are manufactured in strict compliance with Health Canada regulations ensuring quality.  
Manufacturing facility is ISO 13485 certified under Canadian Medical Devices Conformity Assessment System (CMDACS).