



Contents

- Beyes Symbols
- Introduction
- Before use – Safety notes
- Product description
- Operation
- Hygienic maintenance
- Beyes Accessories
- Technical data
- Recycling and disposal
- Limited Warranty

Symbols



WARNING!
(Risk of injury)



ATTENTION!
(To prevent damage)



General
explanations,
without risk to
persons or objects



Sterilizable
up to the stated
temperature

Introduction

Customer satisfaction is the main priority under the Beyes quality policy. This Beyes product has been developed, manufactured and subjected to final inspection according to legal regulations, quality norms and industry standards.

For your safety and for the safety of your patients

Prior to initial use please read the Instructions for use. These explain how to use your Beyes product and guarantee a smooth and efficient operation.

Intended use

Connection piece for the transmission of media (air, water, electricity and light) between the supply hose of the dental unit and the air drives.

Misuse can damage the EZ-Swivel Coupler and involves risk and danger to user and third parties.

Skilled application

The EZ-Swivel Coupler is intended only for skilled application in dentistry according to its purpose of use in compliance with the valid health and safety at work regulations and the valid accident prevention regulations as well as in compliance with these Instructions for use. The EZ-Swivel Coupler should be prepared for use and maintained by staff who have been trained in procedures for infection control, personal safety and patient safety. Improper use, (e.g. through poor hygienic maintenance), noncompliance with our instructions or the use of accessories and spare parts which are not approved by Beyes, invalidates all claims under warranty and any other claims.

Service

In case of service or repair contact the authorized Beyes service center or distributor.

Service and maintenance work must only be carried out by the authorized Beyes service center or distributor.

Before use – Safety notes

! Please read this manual prior to using your EZ-Swivel Coupler. The use of this product is only intended for use by trained dental personnel. We recommend that you retain this manual for future reference.

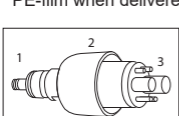
- Double insulation for the highest expected supply voltage must be provided between the primary and secondary power circuits.
- Double insulation for the highest expected secondary voltage must be provided between the secondary voltage and earth (PE).
- The secondary voltage must be limited to a maximum of 3.3 V AC/DC.
- The leakage currents of the applied part must be kept.
- The secondary circuits must be protected against short circuits and overloads.
- The user is not allowed to touch the ring contacts and the patient at the same time.
- Only use supply hoses which comply with EN ISO 9168.
- Always ensure that the correct operating conditions exist and that the coolant is working properly.
- As cooling air, only use air which has been processed by dental compressors and which is filtered, free of oil and cooled.
- Before using the coupling, always check it for damage and loose parts.

Technical data

Hose type	ISO 9168 type 1 ISO 9168 type 3
Recommended voltage range	3.2 ± 0.1 V AC/DC
Temperature for storage	-40 °C to +70 °C (-40 °F to +158 °F)
Air humidity for storage	8 % to 80 % (relative), non-condensing
Ambient temperature during operation	+10 °C to +35 °C (+50 °F to +86 °F)
Air humidity during operation	15 % to 80 % (relative), non-condensing

Hygienic maintenance prior to initial use

The EZ-Swivel Coupler is in a clean condition and sealed in PE-film when delivered. Sterilize the EZ-Swivel Coupler.

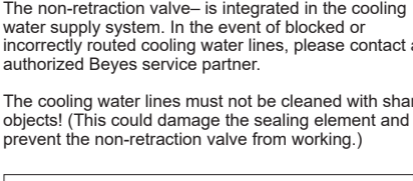


Product description

- 1.O-rings
- 2.Retention sleeve & Spray regulation ring
- 3.Water filter with resuction stop

! All EZ-Swivel Coupler are equipped with a non-retraction valve which prevents contaminated cooling water from being sucked back into the turbine and the turbine hose. The non-retraction valve– is integrated in the cooling water supply system. In the event of blocked or incorrectly routed cooling water lines, please contact an authorized Beyes service partner.

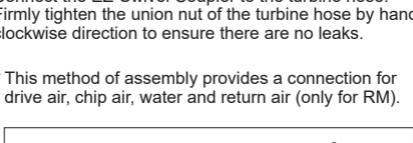
! The cooling water lines must not be cleaned with sharp objects! (This could damage the sealing element and prevent the non-retraction valve from working.)



Operation – Connecting the EZ-Swivel Coupler

- 1.Connect the EZ-Swivel Coupler to the turbine hose.
- 2.Firmly tighten the union nut of the turbine hose by hand in a clockwise direction to ensure there are no leaks.

! This method of assembly provides a connection for drive air, chip air, water and return air (only for RM).



Operation – Disconnecting the EZ-Swivel Coupler

- 1.Unscrew the union nut of the turbine hose by hand in an anticlockwise direction.
- 2.Carefully remove the coupling from the turbine hose.

Checking the EZ-Swivel Coupler for leaks

- Check for leaks between the EZ-Swivel Coupler and turbine hose.
- Block the water outlet on the tip of the EZ-Swivel Coupler using a piece of rubber or leather.
- Turn on the spray water. After being blocked for 10 seconds, no water must escape between the coupling and turbine hose or at the spray regulator.
- If you observe problems (e. g. vibrations, unusual noise and/or leaks), stop the EZ-Swivel Coupler immediately and contact an authorized Beyes service partner.

Operation – Changing air driven instruments

- Observe the instructions in the relevant instructions for use.
- Only connect air driven instruments with EZ-Swivel connections to the EZ-Swivel Coupler.

The user accepts sole responsibility if other air driven instruments are used. We accept no liability in such cases.



Never connect or disconnect the air driven instrument while the system is running!

- Attach the air driven instrument onto the EZ-Swivel Coupler until it audibly engages.
- Pull axially along the EZ-Swivel Coupler to check that the air driven instrument is securely attached.
- Pull the retention sleeve of the EZ-Swivel Coupler back.
- To disconnect the air driven instrument, pull it off in axial direction.

Regulating the spray water

For EZ-Swivel coupler: Adjustment directly at the spray adjuster ring or at the adjustable valves of the unit.

EZ-Swivel coupler can only be adjusted at the unit.

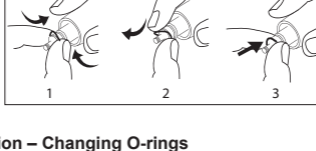
Minimum spray flow: Line marking on the spray adjuster ring and point on the retention sleeve correspond with each other.

Maximum spray flow: Turn the spray adjuster ring to the right or left.

! The water flow can only be varied using this spray adjuster ring. It cannot be stopped completely.

Test run

- Connect the EZ-Swivel Coupler to the turbine hose.
- Attach the air driven instrument onto the EZ-Swivel Coupler until it audibly engages.
- Start the air driven instrument.
- If you observe problems (e. g. vibrations, unusual noise and/or leaks), stop the EZ-Swivel Coupler immediately and contact an authorized Beyes service partner.



Operation – Changing O-rings

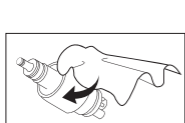
- ⚠ Immediately replace any damaged or leaking O-rings. Never use sharp tools!

1. Press the O-ring firmly together with your thumb and index finger until it forms a loop.
2. Pull off the O-ring.
3. Slide the new O-ring back on.

Hygienic maintenance

- ☞ Follow your country-specific directives, standards and guidelines for cleaning, disinfection and sterilization.

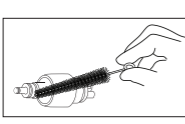
- ⚠ Wear protective clothing.
- Remove the EZ-Swivel Coupler from the turbine hose.
- Clean and disinfect the EZ-Swivel Coupler immediately after every treatment.
- The EZ-Swivel Coupler is sterilizable.
- Manual internal and external cleaning is to be carried out before each sterilization.



Pre-disinfection

- If heavily soiled: Clean first with disinfectant cloths.

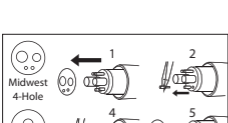
- ☞ Only use disinfectants that have no protein-fixing effects.



Manual cleaning internal & external

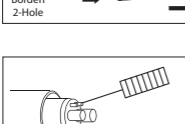
1. Rinse under demineralized water (< 38 °C / < 100 °F) with the aid of a brush.
2. Remove any liquid residues (absorbent cloth, blow dry with compressed air).

- ⚠ Do not place the EZ-Swivel Coupler in liquid disinfectant or in an ultrasonic bath!



Changing the water filter (M4/B2)

1. Remove the seal.
2. Pull out the water filter with tweezers.
3. Clean the water filter.
4. Carefully insert the water filter.
5. Slide on the seal.

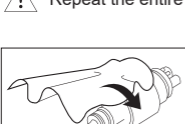


Clean the water filter

Use the nozzle cleaner carefully to remove dirt and deposits from the water filter outlets.

- ☞ The water filter can be cleaned in an ultrasonic bath.

- ⚠ Repeat the entire hygiene and maintenance process.



Manual disinfection

- ☞ Beyes recommends wiping down with disinfection.

- Use only disinfectants which do not contain chlorine and which are certified by officially recognized institutes.
- Note the manufacturer's specifications for the use of the disinfectants.

Storage in the surgery

For storage, the EZ-Swivel Coupler is normally firmly screwed between the air driven instrument (turbine, air motor, air scaler) and the turbine hose and stored on the turbine hose.

Sterilization and storage

- ☞ Beyes recommends sterilization according to EN 13060, class B

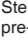
- Note the instructions of the unit manufacturer.
- Clean and disinfect before sterilizing.
- Wrap the EZ-Swivel Coupler in sterile goods packing according to EN 868-5.
- Make sure, that you only remove dry sterile goods.
- Store sterile goods dust-free and dry.

Approved sterilization procedures

- ☞ Follow your country-specific directives, standards and guidelines.

Sterilization

Sterilization of instruments by applying a fractionated pre-vacuum steam sterilization process (according to EN285/EN 13060/EN ISO 17665) under consideration of the respective country requirements.

 Recommended sterilization temperature:

135°C(±2°C), holding time: 5 min.

Minimum drying time after sterilization: 8 minutes.

Flash sterilization is not allowed on lumen instruments!

Recycling and disposal

Recycling

Beyes considers that it has a special duty towards the environment. The EZ-Swivel Coupler equipment along with its packaging has been designed to be as environmentally friendly as possible.



Disposal of the EZ-Swivel Coupler

Follow your country-specific laws, directives, standards and guidelines for the disposal of used electrical devices.

Ensure that the parts are not contaminated on disposal.

Disposal of the packaging material

All packaging materials have been selected according to environmentally compatible and disposal aspects and can be recycled. Please send old packaging materials to the relevant collection and reprocessing system. In this way, you will contribute to the recycling of raw materials and the avoidance of waste.

Limited Warranty

Beyes Dental Canada hereby warrants against defect in material and workmanship that for a period of 12 months from the date of purchase, this product will perform satisfactorily under normal use and service. No warranty claim can be inferred here, as wear may occur earlier or later than indicated above depending on use, frequency of sterilization and frequency of maintenance. Beyes shall under no circumstances be liable for incidental or consequential damages or damage due to improper use or maintenance.

This Warranty is subject to the following conditions Beyes will, without charge repair or replace (at Beyes sole discretion) any defective part/s covered in this warranty. If the conditions are met, the defective item must be returned to an authorized Beyes service center or distributor. Accompanied by the original invoice or packing list. This warranty is in lieu of all other warranties, expressed or implied .

* This device is not field repairable

* All brands are holders of their respective trademarks.

- ⚠ Federal law restricts this device to sale by or on the order of a dentist, physician, or any other practitioner licensed by the law of the states in which he or she practices to use or order the use of this device. Beyes Dental Canada Inc. is not responsible for any typographical errors. Subjects to technical changes without notice.

Beyes Dental Canada Inc.
23-595 Middlefield Rd
Scarborough, ON M1V3S2
Canada

Tel: 1-416-281-1888
Email: info@beyes.ca
Web: www.beyes.ca



Lotus NL B.V.
Koningin Julianaplein 10, le Verd,
2595AA, The Hague,
Netherlands



0197

Document #: ENI068
Rev.2/ 09.19.24