



Instructions For Use EP12-NS Hygiene Handpiece

TABLE OF CONTENTS

- Before You Begin
- Safety Information
- Technical Specifications
- Attaching Disposable Propphy Angle
- Mounting Attachments to motor
- Lubrication
- Sterilization
- Warranty



WARNING!
(Risk of injury)



ATTENTION!
(To prevent damage)



Thermal washer
disinfectable



Sterilizable
up to the stated
temperature

BEFORE YOU BEGIN

Please read this instruction for use prior to using your low-speed attachment. The use of this product is intended for use by trained dental personnel. We recommend that you retain this manual for future reference.

SAFETY INFORMATION

- Handpieces and attachments should be sterilized after each patient to prevent any transmission of infectious organisms.
- Suitable hygienic measures must be taken to prevent cross contamination between patients, operators and other personnel.
- The handpiece must only be operated when the attachment is properly seated. Do not attempt to extend the length of a bur by improper positioning in the chuck.

TECHNICAL SPECIFICATIONS

Model	EP12-NS
Maximum Speed	10,000 RPM
Bur Type	Disposable Propphy Angles

ATTACHING DISPOSABLE PROPHY ANGLE

1. Fit the disposable prophy angle onto the handpiece by aligning the groove with the notch on the nose cone.
2. Insert the prophy angle as far as it will go.
3. To remove, pull prophy angle away from handpiece axially. (Fig.1)

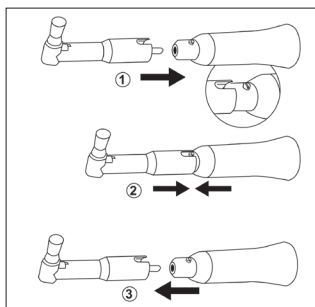


Fig.1

MOUNTING ATTACHMENTS TO THE MOTOR

The EP12-NS attachment is compatible with most air motors having an “E-type” coupling per ISO 3964.

To mount an attachment to a motor, simply slide the attachment onto the nose of the slow speed motor until it clicks into place. Check for secure connection. To remove an attachment, simply pull the attachment away from the motor. (Fig. 2)

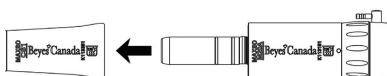


Fig.2

LUBRICATION

Lubricate using BeyesLube Spray after each use and/or before autoclaving. (Fig. 3)

- Mount the E-type spray nozzle into the spray port.
- Shake the can 3-4 times to mix lubricant and propellant.
- Insert the E-type spray nozzle in the rear of the handpiece and spray lubricant until the oil comes out of the handpiece head (approximately 2-3 seconds).

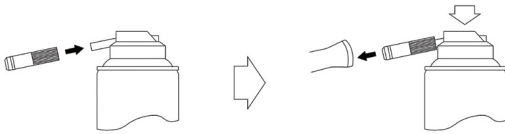


Fig.3

! CAUTION

- Be sure to hold the handpiece firmly to prevent the handpiece from slipping out of hand by the spray pressure when lubricating.
- Supply lubricant until it comes out of the handpiece head (for approx. 2 seconds).
- Hold the BeyesLube Spray can upright.

Sterilization

The handpiece must be cleaned and sterilized between patient uses. A wrapped handpiece should be steam sterilized at 132°C for a minimum of 10 minutes or at 121°C for a minimum of 50 minutes. Do not exceed 135°C.

- ! An unwrapped handpiece needs to be used immediately or sterility is not maintained.

 Do not exceed the sterilizer manufacturer's guidelines for load capacity.

- ! Use steam sterilization exclusively for complete sterility. Never dry heat sterilize, ultrasonically clean, or expose handpiece to chemical disinfection or cold sterilization by:
 - Immersion techniques or surgical milk
 - Surface wipes, hand soaps, or detergents
 - Surface sprays
 - Sterilization bags containing disinfectants

LIMITED WARRANTY

Beyes Dental Canada hereby warrants against defect in material and workmanship that for a period of 1 year from the date of purchase, this product will perform satisfactorily under normal use and service. No warranty claim can be inferred here, as wear may occur earlier or later than indicated above depending on use, frequency of sterilization and frequency of maintenance. Beyes shall under no circumstances be liable for incidental or consequential damages or damage due to improper use or maintenance.

This Warranty is subject to the following conditions.

Beyes will, without charge repair or replace (at Beyes sole discretion) any defective part/s covered in this warranty. If the conditions are met, the defective item must be returned to an authorized Beyes service center or distributor. Accompanied by the original invoice or packing list. This warranty is in lieu of all other warranties, expressed or implied.

*This device is not field repairable *All brands are holders of their respective trademarks.

! Federal law restricts this device to sale by or on the order of a dentist, physician, or any other practitioner licensed by the law of the states in which he or she practices to use or order the use of this device. Beyes Dental Canada Inc. is not responsible for any typographical errors. Subjects to technical changes without notice.

Beyes Dental Canada Inc.
23-595 Middlefield Road
Toronto, Ontario, M1V 3S2
Canada
Tel: 1-416-281-1888
Email: info@beyes.ca
Web: www.beyes.ca



Lotus NL B.V.
Koningin Julianaplein 10, le Verd,
2595AA, The Hague,
Netherlands
Tel: +31645171879 (English)
+31626669008 (Dutch)
Web: www.beyes.ca



Document #: ENI024
Rev.1 / 19.09.19