



### Table of Contents

- Before You Begin
- Safety Information
- Technical Specifications
- Handpiece and Bur Insertion
- Handpiece and Bur Removal
- Lubrication
- Sterilization
- Warranty



**WARNING!**  
(Risk of injury)



**ATTENTION!**  
(To prevent damage)



Thermal washer  
disinfectable



Sterilizable  
up to the stated  
temperature

### Before You Begin

Please read this Operator's Manual prior to using your Slow Speed Attachments. The use of these products is intended for use by trained dental personnel. We recommend that you retain this manual for future reference. This manual includes several attachment models so please refer to the Technical Specifications table to insure the model of your attachment is included.

### Safety Information

- Slow speed handpieces and attachments should be sterilized after each patient to prevent any transmission of infectious organisms.
- Suitable hygienic measures must be taken to prevent cross contamination between patients, operators and other personnel.
- Only operate this slow speed handpiece when the attachments and burs are properly seated. Do not attempt to extend the length of a bur by improper positioning in the chuck.

### Technical Specifications

<b>Model</b>	CS1-CH01	CS1-CH02 , CS1-CH03, CS1-CH04, CS1-CH05, CS1-CH06, CS1-CH07
<b>Maximum Speed</b>	40,000 (rpm)	30,000 (rpm)
<b>Bur Type</b>	ISO 1797-1 Type3 FG-Bur	ISO 1797-1 Type1 Latch Bur

### Mounting attachments to the motor

Slide the attachment onto the nose of the slow speed motor until it clicks into place. Check for secure connection. To remove an attachment, simply pull the attachment away from the motor. Fig 1

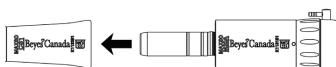


Fig 1

### Bur Insertion

#### CS1-CH01 (FG-Bur)

Insert the bur into the head. Push the button and insert the bur fully. Fig 2

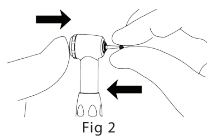


Fig 2

#### CS1-CH02 (Latch Bur)

Insert the latch bur into the head. Slightly rotate the bur until it engages with the latch mechanism. Continue to push it inward until it clicks. Fig 3

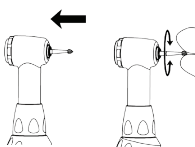


Fig 3

#### CS1-CH03, CS1-CH04, CS1-CH05, CS1-CH06, CS1-CH07

1. Swing the Latch Plate to open the chuck. Fig 4
2. Insert the Latch bur.
3. Swing the Latch Plate back to closed position.

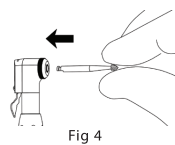
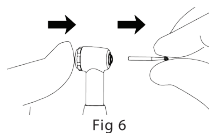


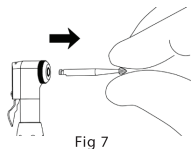
Fig 4

## Bur Removal CS1-CH01, CS1-CH02

Push the cap on the back of the head and pull bur to remove. Fig 6



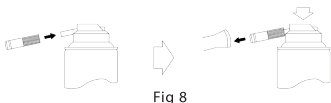
CS1-CH03, CS1-CH04, CS1-CH05, CS1-CH06, CS1-CH07  
Swing the Latch Plate to open position and pull bur to remove. Fig 7



## Lubrication

Lubricate with Beyes Spray Lubricant after each use and/or before autoclaving. Fig 8

- Mount the E-type spray nozzle into the spray port.
- Shake the can 3-4 times to well mix lubricant and propellant.
- Insert the E-type spray nozzle in the rear of the handpiece and spray for
- Approximately 2-3 seconds until the oil comes out of the handpiece



## Caution

- Be sure to hold the handpiece firmly to prevent the handpiece from slipping out of hand by the spray pressure when lubricating.
- Supply lubricant until it comes out of the handpiece head (for approx. 2 seconds).
- Hold the Beyes Spray can upright.

## Sterilization

The handpiece must be cleaned and sterilized between patient uses. A wrapped handpiece should be steam sterilized at 132°C for a minimum of 10 minutes or at 121°C for a minimum of 50 minutes. Do not exceed 135°C.

An unwrapped handpiece should be steam sterilized at 132°C for a minimum of 8 minutes or at 121°C for a minimum of 30 minutes. Do not exceed 135°C.

Note: An unwrapped handpiece needs to be used immediately or sterility is not maintained.

Do not exceed the sterilizer manufacturer's guidelines for load capacity.

**CAUTION:** Use steam sterilization exclusively for complete sterility. Never dry heat sterilize, ultrasonically clean, or expose handpiece or swivel to chemical disinfection or cold sterilization by:

- Immersion techniques or surgical milk
- Surface wipes, Hand soaps, or Detergents
- Surface sprays
- Sterilization bags containing disinfectants

## Limited Warranty


Beyes Dental Canada hereby warrants against defect in material and workmanship that for a period of 12 months from the date of purchase, this product will perform satisfactorily under normal use and service. No warranty claim can be inferred here, as wear may occur earlier or later than indicated above depending on use, frequency of sterilization and frequency of maintenance. Beyes shall under no circumstances be liable for incidental or consequential damages or damage due to improper use or maintenance.

This Warranty is subject to the following conditions

Beyes will, without charge repair or replace (at Beyes sole discretion) any defective part/s covered in this warranty. If the conditions are met, the defective item must be returned to an authorized Beyes service center or distributor. Accompanied by the original invoice or packing list. This warranty is in lieu of all other warranties, expressed or implied.

\* This device is not field repairable

\* All brands are holders of their respective trademarks.

 Federal law restricts this device to sale by or on the order of a dentist, physician, or any other practitioner licensed by the law of the states in which he or she practices to use or order the use of this device.