

Maxso® M200E

Non-Optic High Speed Handpiece

- 19W of Torque
- 400,000 RPM
- Single Spray
- Push Button
- Low Turbine Noise
- No Swivel
- 6 Months Warranty

Backend 4 Hole
Code HP2105

Reg. \$158/ea

Net: \$131.⁶⁷/ea

BUY 5, GET 1 FREE



Maxso® M200 Smart

Non-Optic High Speed Handpiece

- 19W of Torque
- 400,000 RPM
- Push Button Chuck
- Micro-tex Surface
- Triple Water Spray
- 12 Months Warranty

Backend 4 Hole
Code HP2009

Reg. \$259/ea

Net: \$194.²⁵/ea

BUY 3, GET 1 FREE



Maxso® Low Speed

E-Type Connection

BUY 3, GET 1 FREE

Mix & Match



12 Months Warranty

		Reg	Net
A. SL2025	1:1 Push Button (FG Burs)	\$299	\$224.25
B. SL2026	1:1 Push Button (CA Burs)	\$190	\$142.50
C. SL2028	1:1 Latch Type (CA Burs)	\$160	\$120
D. SL2034	1:1 Screw-On	\$150	\$112.50
E. ST2010	1:1 Straight Nose Cone	\$139	\$104.25
F. SL1002	4:1 Nose Cone, For DPA	\$299	\$224.25
G. MT2010	Air Motor, 4 Holes	\$325	\$243.75

Mix & Match any 3. Promotional goods must be of equal or lesser value than the lowest priced item purchased.

Duray® Intraoral Sensor Package

- Thinnest Sensor 4.4mm
- Durable and Reliable: Waterproof with IP68 protection and can be immersed in disinfectant liquids to prevent cross infections
- High Resolution Imaging: With a theoretical resolution of 25 lp/mm and through advanced CMOS technology, image quality is exceptional
- Compatible with Major Imaging Software: Apeteryx, Dexis, Dentrix Ascend, Eaglesoft, Open Dental, Suni, Schick, Tigerview, Vixwin, XDR, and more!
- 24 Months Warranty



Model	Code	Reg.	Sale
Size 0	(DS0001)	\$2,340	\$2,099
Size 1	(DS1001)	\$3,086	\$2,650
Size 1.5	(DS1501)	\$3,380	\$2,800
Size 2	(DS2001)	\$3,850	\$3,250
Size 1+2 Package	(DS3001)	\$6,600	\$5,600



Duray® 2D & Ceph

Extraoral X-ray Series

- Smart Backlight
- Integrated Touchscreen
- Advanced Sensor
- New Dynamic and Automatic Image Focusing
- One Shot Ceph
- Advanced Sensor
- Smart Backlight

Duray 2D Pan
Code: XR3020

Duray 2D Ceph
Code: XR3021



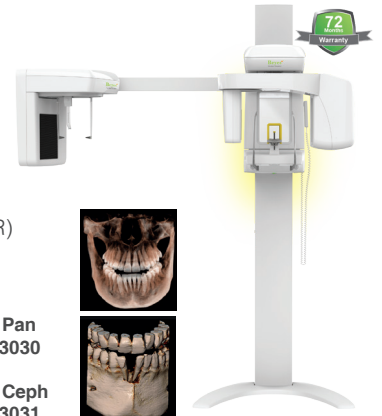
Duray® 3D & Ceph

Extraoral X-ray Series

- Touchscreen Next To Patient
- Quick Cephalometrics
- Instantly Upgradeable
- Automatic Metal Artifact Reduction (AMAR)
- Automatic Noise Reduction (ANR)
- Advanced Technology
- Mirroring
- Smart Backlight
- Safe & Easy
- Plug & Play
- Quick Positioning

Duray 3D Pan
Code: XR3030

Duray 3D Ceph
Code: XR3031



Accurator® A2

Apex Locator, Compatible with G2 Endo Motor

- 4.5" wide, color LCD screen provides clear images with high contrast
- Easy-to-use interface with adjustable inclination
- Accurate measurement in wet and dry canals
- Automatic calibration
- Autoclavable file clip, file hook, file probe
- 12 Months Warranty

Code: AL2080

Reg. \$921.80 **Sale: \$735**



Duray® V2

DC X-Ray Unit

- Advanced DC Technology
- Excellent Image Quality
- Built-in DAP allows dose monitoring
- Effortless and stable positioning
- 24 Months Warranty

Code: (XR2012)

Reg. \$4,999 **Sale: \$3,995**



FREE GOODS REDEMPTION: 1.Go to "http://beyesdental.com/en/redeems/new" 2.Fill out the form and submit (Promo code: **USQ325**)

*Free goods must be of equal or lesser value and cannot be combined with any other offers. All offers will require a proof of purchase dated from July 1 - September 30, 2025 and must be reflected on one invoice. Offers must be redeemed no later than October 15, 2025. Please allow 4 to 8 weeks for promotion to be processed. All brands are holders of their respective trademarks.